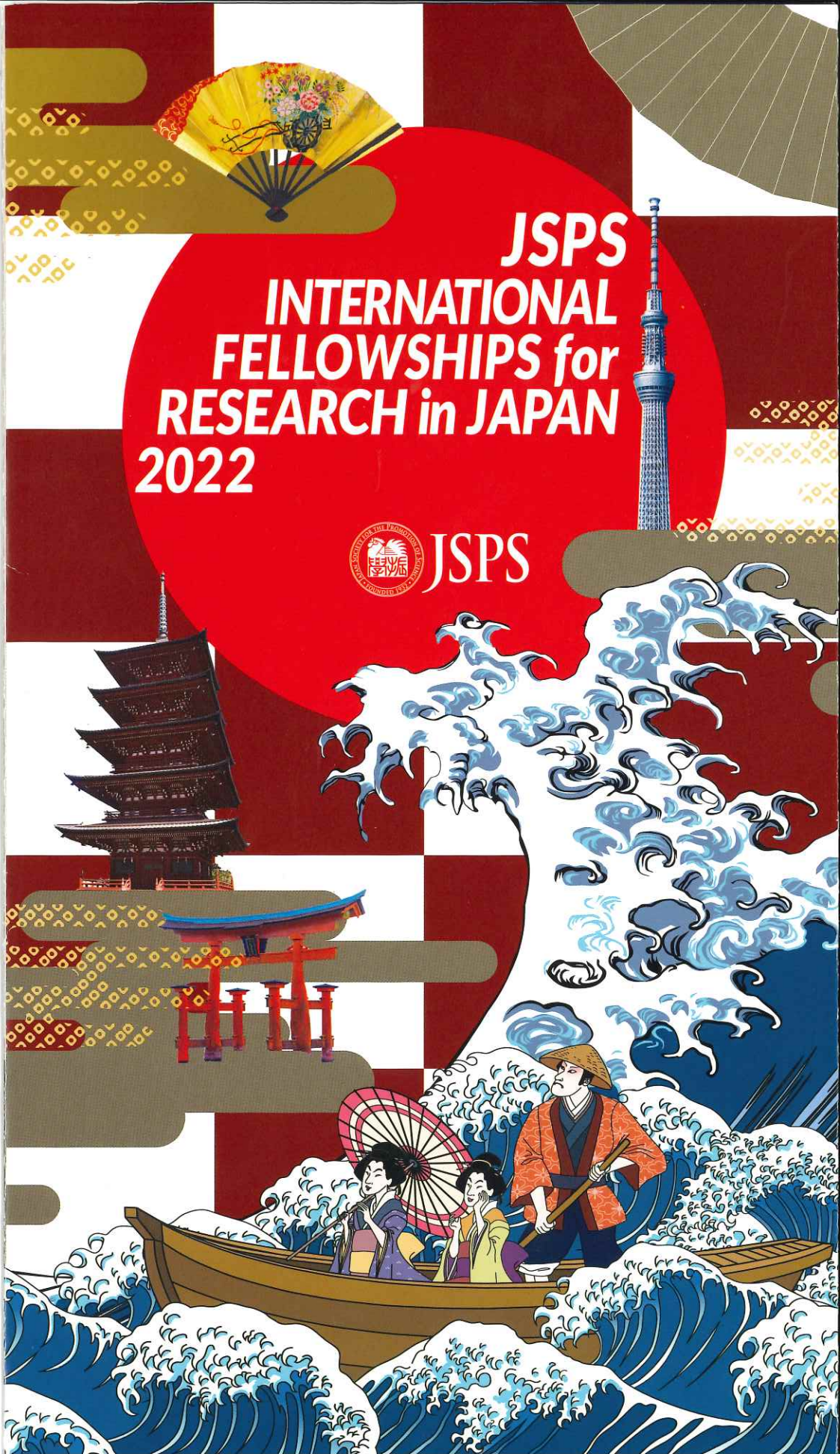


JSPS
INTERNATIONAL
FELLOWSHIPS for
RESEARCH in JAPAN
2022



JSPS



Doctoral Fellowships for Research in Japan

Short-term

Purpose

To provide opportunities for pre- / post-doctoral researchers from the US, Canada and Europe to conduct, under the guidance of their hosts, cooperative research with leading research groups in universities and other Japanese institutions.

Duration of Fellowship 1 to 12 months

Approximate Number of Fellowships Awarded 140

Fellow Eligibility

- Be a citizen or permanent resident of the US, Canada, European Union countries, UK, Switzerland, and Norway or Russia.
- Hold a doctorate degree received within the past 6 years, or be enrolled in a doctoral course and scheduled to receive a Ph.D. within 2 years.

Be at a university or research institution.

Terms of Award

- Round-trip air ticket Overseas travel insurance
- Monthly maintenance allowance Ph.D. holders: ¥362,000
Non-Ph.D. holders: ¥200,000
- Settling-in allowance of ¥200,000 (For 3 or more months of tenure)
- Research support allowance of up to ¥70,000 × the number of months of tenure

How to Apply

- Application made by a host researcher through his/her institution in Japan
- Nomination through an overseas nominating authority (For the Short-term program, eligible countries are: US, UK, France, Germany, and Sweden).

[w/index.html](#)

Standard

Purpose

To provide opportunities for excellent postdoctoral researchers from other countries to conduct, under the guidance of their hosts, cooperative research with leading research groups in universities and other Japanese institutions.

Duration of Fellowship 12 to 24 months

Approximate Number of Fellowships Awarded 340

Fellow Eligibility

- Be a citizen of a country that has diplomatic relations with Japan (JSPS treats Taiwanese and Palestinian researchers in this manner.).
- Hold a doctorate degree received within the past 6 years, or be scheduled to receive a doctorate degree before the Fellowship goes into effect.

Terms of Award

- Round-trip air ticket Overseas travel insurance
- Monthly maintenance allowance of ¥362,000
- Settling-in allowance of ¥200,000
- Grant-in-Aid for JSPS Research Fellows (KAKENHI)

How to Apply

- Application made by a host researcher through his/her institution in Japan
- Nomination through an overseas nominating authority (For the Short-term program, eligible countries are: US, UK, France, Germany, and Sweden).

Mid-career / Professor

JSPS Invitational Fellowships for Research in Japan

Long-term

Purpose

To invite overseas researchers with excellent records of research achievements to collaborate with Japanese colleagues in carrying out research through long-term visits.

Duration of Fellowship 2 to 10 months

Approximate Number of Fellowships Awarded 60

Fellow Eligibility

- Be a citizen or a permanent resident of a country that has diplomatic relations with Japan (JSPS treats Taiwanese and Palestinian researchers in this manner). To be eligible, researchers of Japanese nationality residing overseas must have lived in other country for at least 10 years and been actively engaged in research in that country throughout the period.
- Be a researcher in a position equivalent to a university professor, associate professor or assistant professor in Japan, or received their doctorate degree prior to 6 years or more.

Host Eligibility

Be a researcher who is employed full-time at a university or research institution.

Terms of Award

- Round-trip air ticket Overseas travel insurance
- Monthly maintenance allowance of ¥387,600
- Research support allowance of up to ¥150,000

How to Apply

- Application made by a host researcher through his/her institution in Japan

URL

<https://www.jsps.go.jp/english/e-inv/index.html>

Short-term

Purpose

To invite overseas researchers with excellent records of research achievements for short-term visits to Japan and provide them opportunities for discussions, opinion exchanges, lectures, and other activities.

Duration of Fellowship 14 to 60 days

Approximate Number of Fellowships Awarded 160

Fellow Eligibility

- Be a citizen or a permanent resident of a country that has diplomatic relations with Japan (JSPS treats Taiwanese and Palestinian researchers in this manner). To be eligible, researchers of Japanese nationality residing overseas must have lived in other country for at least 10 years and been actively engaged in research in that country throughout the period.
- Be a researcher in a position equivalent to a university professor, associate professor or assistant professor in Japan, or received their doctorate degree prior to 6 years or more.

Terms of Award

- Round-trip air ticket Overseas travel insurance
- Daily maintenance allowance of ¥18,000
- Research support allowance of up to ¥150,000

How to Apply

- Application made by a host researcher through his/her institution in Japan

Exclusively for regular members of JSPS alumni associations

BRIDGE Fellowship Program

BRIDGE Fellowship Program

Purpose

To provide opportunities for alumni members who have conducted research activities in Japan under JSPS programs to sustain, develop, and/or strengthen research collaborations with Japanese colleagues.

Duration of Fellowship 14 to 30 days

Approximate Number of Fellowships Awarded 50

Fellow Eligibility

- Be a researcher who has experienced research in Japan under a JSPS program and who is currently a regular member of an officially recognized JSPS alumni association.
- Be a researcher who is employed as an active researcher working at a university or a research institute.
- Host researcher must agree to accept the Fellow.

Host Eligibility

Be a researcher who is employed full-time at a university or research institution.

Terms of Award

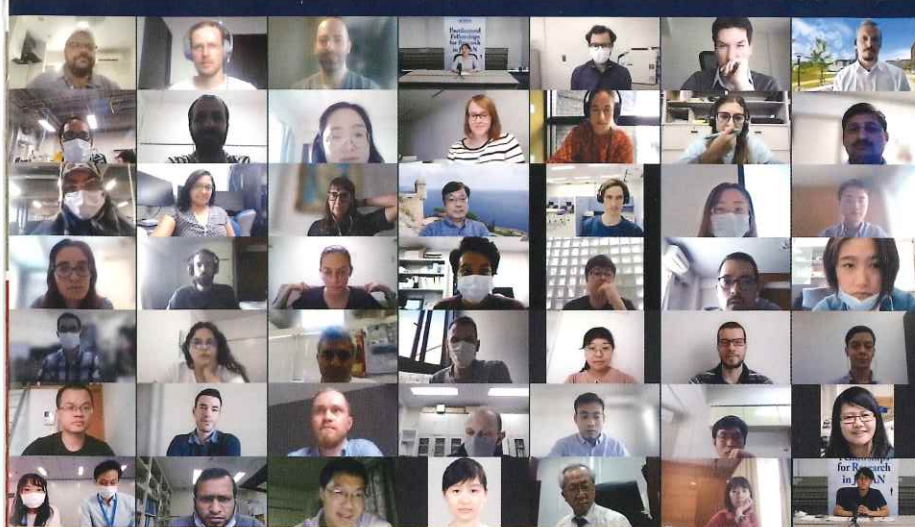
- Round-trip air ticket Overseas travel insurance
- Daily maintenance allowance of ¥13,000
- Research support allowance of up to ¥100,000

How to Apply

- Nomination through the applicant's JSPS alumni association.

URL

<https://www.jsps.go.jp/english/e-plaza/bridge/index.html>



JSPS INTERNATIONAL FELLOWSHIPS for RESEARCH in JAPAN 2022



The Japan Society for the Promotion of Science (JSPS) is an independent administrative institution that performs the following main functions:

- Creating Diverse World-Level Knowledge
- Fostering the Next Generation of Researchers to Pioneer Knowledge
- Harnessing University Strengths to Enhance Education and Research Capability
- Building a Robust International Research Base
- Building a Comprehensive Academic Information Analysis Base



JSPS Fellows Plaza

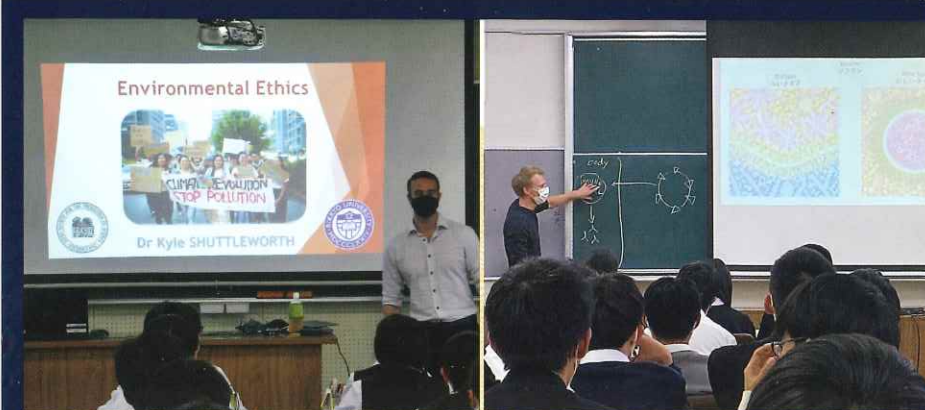
JSPS Fellows Plaza supports JSPS fellows during their research tenure in Japan, and after they have returned to their country through the alumni associations.

<https://www.jsp.go.jp/english/e-plaza/index.html>
 ☎ +81-3-3263-3444 ✉ fellowsplaza@jps.go.jp

JSPS Researchers Network (JSPS-Net)

JSPS has launched the JSPS-Net, a social networking service, to support the formation of networks and research communities for both Japanese and international researchers in order to contribute to strengthening, and expanding human networks derived from long years of research exchange between Japan and other countries.

<https://www-jsp-net.jsp.go.jp/>
 ☎ +81-3-3263-1872 ✉ jsp-net@jps.go.jp



JSPS carries out programs that provide overseas researchers who have an excellent record of research achievements with an opportunity to conduct collaborative research, discussions, and opinion exchanges with researchers in Japan.

Features

- Features 1 ■ We value the pursuit of knowledge above all else. The program is open to all, regardless of nationality or academic field.
- Features 2 ■ Tailored to a full spectrum of researchers from early-career researchers to eminent scientists.
- Features 3 ■ Flexible durations ranging from short to long-term.



Science Dialogue

Science Dialogue offers JSPS fellows the unique opportunities to volunteer to give lectures in English on their research work at Japanese high schools in the vicinity of their host institutes.

<https://www.jsp.go.jp/english/e-plaza/e-sdialogue/index.html>
 ☎ +81-3-3263-1730 ✉ sdialogue@jps.go.jp

RONPAKU (Dissertation Ph.D.) Program

The RONPAKU (Dissertation Ph.D.) Program supports promising researchers in countries of Asian, and African countries or other specified countries who wish to obtain a Ph.D. degree from a Japanese university through the submission of a dissertation without matriculating a doctoral course.

<https://www.jsp.go.jp/english/e-ronpaku/index.html>
 ☎ +81-3-3263-2368 ✉ ronpaku@jps.go.jp





Alumni Associations

JSPS supports 20 researcher communities (alumni associations) established by former JSPS fellows in countries around the world, allowing them to maintain and expand their networks among themselves and with Japanese colleagues after completing their tenures and returning to their countries.

The BRIDGE Fellowship Program provides members of officially established JSPS alumni associations with opportunities to revisit Japan.

https://www.jsps.go.jp/english/e-plaza/20_alumni.html

+81-3-3263-1872 alumni@jsps.go.jp

JSPS Overseas Offices

	U.S.A.	JSPS Washington Office	https://jspsusa.org 2001 L Street N.W., Suite 1050, Washington D.C. 20036, USA
		JSPS San Francisco Office	http://jspsusa-sf.org 2001 Addison Street, Suite 260, Berkeley, CA 94704 USA
	Germany	JSPS Bonn Office	https://www.jsps-bonn.de Wissenschaftszentrum, Ahrstr. 58, 53175, Bonn, GERMANY
	UK	JSPS London Office	http://www.jsps.org 14 Stephenson Way, London, NW1 2HD, UK
	Sweden	JSPS Stockholm Office	https://www.jsps-sto.com Retzius Väg 3, 171 65 Solna, SWEDEN
	France	JSPS Strasbourg Office	https://jsps.unistra.fr Maison Universitaire France-Japon 42a, avenue de la Forêt-Noire, 67000 Strasbourg, FRANCE
	Thailand	JSPS Bangkok Office	https://jsps-th.org No.1016/3, 10th Fl., Serm-Mit Tower, 159 Sukhumvit Soi 21, Bangkok 10110, THAILAND
	China	JSPS Beijing Office	https://www.jsps.org.cn A404, China Foreign Language Mansion, No.89 Xisanhuan Beilu, Haidian District, Beijing 100089, P.R. CHINA
	Egypt	JSPS Cairo Research Station	https://jspscairo.com/ 9 Al-Kamel Muhammad Street, Flat No. 4, Zamalek, Cairo, EGYPT
	Kenya	JSPS Nairobi Research Station	https://www.jspsnairobi.org House Number 3, Windy Ridge Heights on L. R. No. 195/31 and 28, Off Dagoretti Road, 3D Lane, Karen, Nairobi, KENYA
	Brazil	JSPS Science Advisor in São Paulo	https://www.jsps.go.jp/english/soapaulo/index.html Dr. Masato Ninomiya



JSPS

JAPAN SOCIETY FOR THE PROMOTION OF SCIENCE

5-3-1 Kojimachi, Chiyoda-ku Tokyo 102-0083

<https://www.jsps.go.jp/english/index.html>

